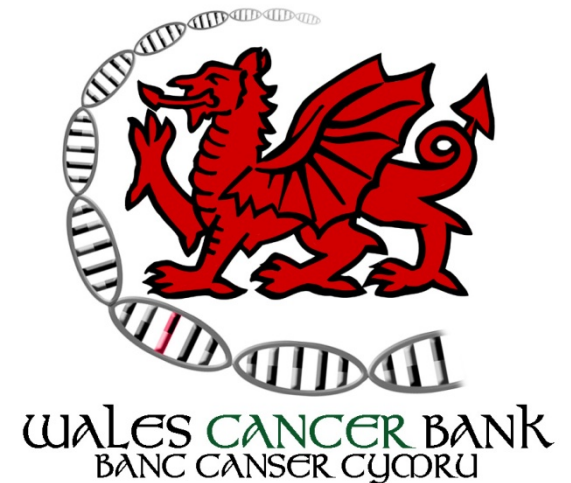


# What biobanks can offer clinical trials



**Dr Alison Parry-Jones**

**Manager, Wales Cancer Bank**



# What biobanks do

- Biobanks are set up to:
  - collect,
  - document,
  - store and
  - process samples of human tissue and/or blood
- SOPs for all processes
- Supply biomaterials for research

# Wales Cancer Bank



- Prospective collection of tissue and blood samples from cancer patients in Wales
- NRES approved to collect, store and issue samples to researchers worldwide involved in cancer research
- Licensed by the HTA

# What are the Advantages of using a biobank?



- Centralised storage
- Excellent sample tracking
- Human Tissue Authority licensed premises with HTA approved:
  - Sample labelling and tracking
  - Standard Operating Procedures
  - Quality Management system





## What WCB does

- Provides a tracking database for clinical trial samples – each trial has its own password protected module
- Logs samples in and records storage co-ordinates
  - 2D Barcode, linked to trial name and number
- Logs samples out for processing or issue to trial approved research projects
- Can provide QA and/or further processing
- Additional services also available, digital imaging, IHC etc



# WCB Experiences

- COIN trial
- Multi-centre, large, international trial
- Currently host 7 trials from 3 CTUs, 4 more in pipeline



# Trial database overview

Wales Cancer Bank

←
✖
LOG
♀
?

Barcode

Printer: HP DeskJet 840C/£

Collection: COIN Logged: Alison Parry-  
 Incomplete tasks: 3 Over Due: 3

Release 1.41 installed

Donation
Samples
Samples with no registered donation
QA samples
Samples summary

Bank Site:

Trial Centre:

Tissue Type:

Pathology:

Research:

EGFR Test:

Paid:

Path Rep:

Period:

wcbum	Trial No	Trial Centre	Pathology	Received	EGFR	Path Rep	Research	Paid	Blocks
TCOIN018028A	18028	Royal Bournemouth	Royal Bournemouth	26/10/2007	True		True	18/03/2	1
TCOIN018029A	18029	Royal Bournemouth	Royal Bournemouth	21/02/2008	True		True	05/09/2	1
TCOIN018030A	18030	Royal Bournemouth	Royal Bournemouth	16/09/2008	True		True	01/05/2	1
TCOIN018031A	18031	Royal Bournemouth	Royal Bournemouth	27/05/2008	True		True	05/09/2	1
TCOIN019001A	19001	Hairmyers	Coin default	04/01/2008	True		True	18/03/2	3
TCOIN019002B	19002	Singleton Hospital	Singleton	13/12/2007	True		True		4
TCOIN019002A	19002	Hairmyers	Coin default	07/01/2008	True		True	18/03/2	1
TCOIN019003A	19003	Hairmyers	Coin default	07/01/2008	True		True	18/03/2	2
TCOIN019003B	19003	Singleton Hospital	Singleton	22/11/2007	True		True		1
TCOIN019004B	19004	Singleton Hospital	Singleton	13/12/2007	True		False		3
TCOIN019004A	19004	Hairmyers	Coin default	07/01/2008	True		False	18/03/2	3
TCOIN019005A	19005	Hairmyers	Coin default	07/01/2008	True		False	18/03/2	1
TCOIN019005B	19005	Singleton Hospital	Singleton	13/12/2007	True		False		2
TCOIN019006A	19006	Hairmyers	Coin default	07/01/2008	True		False	18/03/2	2
TCOIN019006B	19006	Singleton Hospital	Singleton	25/03/2008	True		False		3
TCOIN019007B	19007	Singleton Hospital	Singleton	25/03/2008	True		True		3
TCOIN019007A	19007	Hairmyers	Coin default	04/01/2008	True		True	18/03/2	4

Select

Clear

Copy Collection

Print or Open XL

Open Form -->

Donation

2359

Live Mode

Reserve No

Assign ISCO

Donation

New Sample

List Selection

Collection

Stock Control

Tasks

Log book

TMAs

Worksheets

Project

Order

Shipment

System Config

Help

Exit

# Donor page

### Wales Cancer Bank

Release 1.41 installed

Collection: COIN Logged: Alison Parry-  
Incomplete tasks: 3 Over Due: 3

Printer: HP DeskJet 840C/£

Barcode:

LOG ?

- Reserve No
- Assign ISCO
- Donation**
- New Sample
- List Selection
- Collection
- Stock Control
- Tasks
- Log book
- TMA's
- Worksheets
- Project
- Order
- Shipment
- System Config
- Help
- Exit

#### Trial Number

Trial No:    WCB Number:   
Tissue Origin:

#### Consent

Consent EGFR  Consent for General Research

#### Administration

Trial Centre:      
Hospital Pathology:   Pathology Report:

Date Received:     
Paid:

Live Mode

# Sample page

**Wales Cancer Bank**

Collection: COIN Logged: Alison Parry-  
Incomplete tasks: 3 Over Due: 3

Barcode  Printer HP DeskJet 840C/€

lled Release 1.41 insta

### Bio Sample Record

Bio Sample Type  Date Sample Prepared

Prep Place  Prep User

Barcode  Sample Locked  In TMA?

### Paraffin Sample

Comment

Pathology  Block No

Lesion/Origin  Missing Data

Fixative Start  Fixative Same Day  Fixative Duration  Total hours

Fixative Nature  Histology No

Clone to:  Section Qty  Sample Compromised  Num Cores Taken

If this is a core, it was taken:  
 pre operative  
 post operative

### Coordinates

Cabinet  Row

Shelf

Tray

### Sample Audit

Change Reason  Purpose

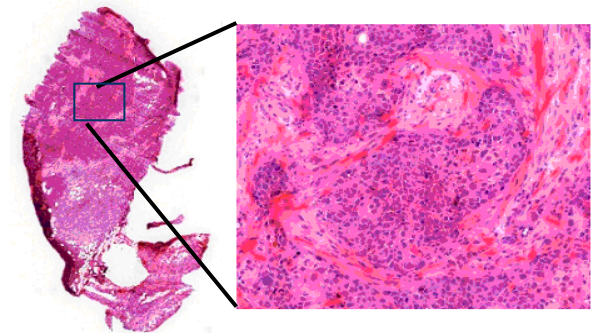
Donation Bio Samples Clone Sample History Save Delete Core Sample EGFR test



# QA – is it what you think it is?

## Pathology QA

- Sections taken from frozen or FFPE blocks to confirm presence of tumour
- H&E digitised – future aim is to make images available over the web for viewing/QA by Trial pathologists





# Working with CTUs

- Involvement in translational trial collection design
- Early request for hosting quote
  - Number and type of samples
  - Any processing or QA requirements
  - Length of storage post recruitment
- Agreements



# Trial design

- Tissue bankers know what it is feasible to collect and in what format
- They can provide specimen patient information sheets, flowcharts etc
- Potentially relieve the pressure on histology departments to provide material for trials and improve supply of biological material for trials



# Neo-adjuvant trials

- Eg. POETIC
- Tissue collection is part of trial
- WCB consent used for tissue collection part of trial
  
- Trials register with WCB to source paraffin blocks



# Summary

Tissue Banks can help with

- Planning trials with sample collection
- Collation and storage of material from multiple hospitals
- Robust sample tracking
- QA and further processing of collected material

No loss of control for trial management or CTU

# Biobanking Events



## ISBER 2010 Annual Meeting

10<sup>th</sup> – 14<sup>th</sup> May 2010

De Doelen Concert Hall and Congress Centre  
Rotterdam, Netherlands

[www.isber.org](http://www.isber.org) to register

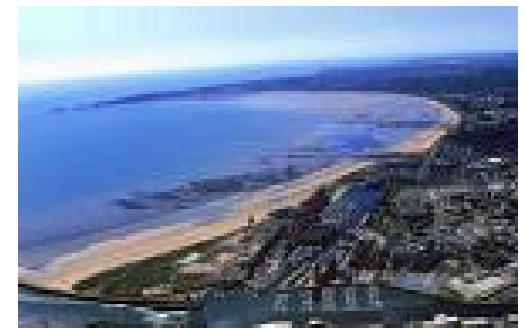


## Wales Cancer Bank Open Day

21<sup>st</sup> May 2010

Swansea

Email: [waydd@cf.ac.uk](mailto:waydd@cf.ac.uk) to register





## Contact details

- Director, Wales Cancer Bank – Professor Malcolm Mason
- Principal Scientist, WCB – Professor Gerry Thomas
- Manager, WCB – Dr Alison Parry-Jones

Telephone: 029 20529226

Email: [walescancerbank@cf.ac.uk](mailto:walescancerbank@cf.ac.uk)

Website: [www.walescancerbank.com](http://www.walescancerbank.com)